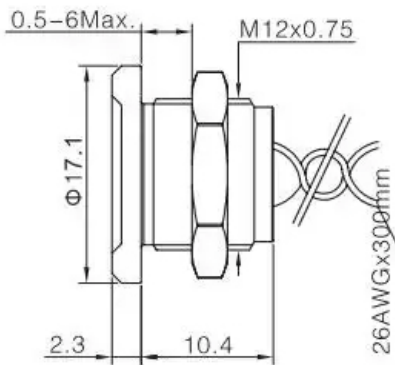


General Specifications



Type	DIWO-PS123Z-10Y-SS1
Rated Current	Momentary pulse ON(1NO)
Maximum voltage	24VAC/DC
Maximum current	200mA
Protection Class	IP68
Mounting hole	12mm
Electrical life	50,000,000 times
The Front Shape	Concave Cap
Terminal Type	Multi-wire leads section 0,22 mm length 300 mm, twisted by pair
Crust material	Stainless steel
Button material	Stainless steel
Panel Thickness	1~ 8 mm
Operation force	About 5-10 N
Operating temperature	-40°C to +75°C
Vibration resistance	10-500 Hz / 10 g
Electrical life	50 million cycles
Certification	CE,ROHS,REACH,

## Operating status description

Finger pressure applied to switch

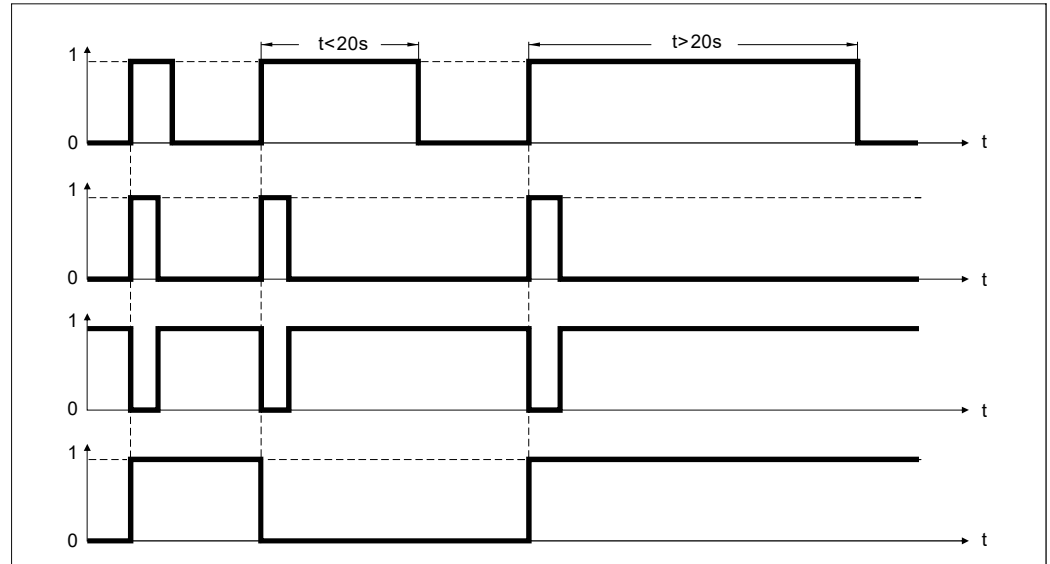
1 = pressure  
0 = no pressure

### OUTPUT

**10**  
Momentary NO (pulse)  
No external power supply required

**01**  
Momentary NC (pulse)  
No external power supply required

**10Z**  
Latching (ON-OFF)  
Requires external power supply



## Wiring diagram

	Non-illuminated	1 LED*	2 LEDs	3 LEDs
Momentary NO (pulse)				
Momentary NO (pulse)				
Latching (ON- OFF)				

NOTE: X means the color of the wire depends on the color of the LED.